



GEN AI

Xgineer™ – Your Virtual Plant Expert

(AI-Powered Chatbot for Process & Manufacturing Industries)

Industries We Empower



OIL & GAS



PHARMA



FMCG



CHEMICAL



STEEL

INDUSTRY CHALLENGES & XGINEER SOLUTION

OPERATOR'S REAL PAIN POINTS IN INDUSTRY

- Hard to find last shift data or alarm causes
- No unified view of trends across systems
- Takes time to answer basic questions
- Alarm overload — too many alarms with no context
- Manual creation of shift reports
- No predictive insight
- Troubleshooting takes too long
- Hard to compare batches or lots
- Communication gaps between shifts
- Delayed decisions due to system switching



PROCESS & PLANT ENGINEER'S REAL PAIN POINTS IN INDUSTRY



- Hard to find last shift data or alarm causes
- No unified view of trends across systems
- Takes time to answer basic questions
- Alarm overload — too many alarms with no context
- Manual creation of shift reports
- No predictive insight
- Troubleshooting takes too long
- Hard to compare batches or lots
- Communication gaps between shifts
- Delayed decisions due to system switching

PRODUCTION & MAINTENANCE ENGINEER'S REAL PAIN POINTS IN INDUSTRY

- Struggle to correlate breakdowns with process deviations
- No early-warning alerts for critical equipment failures
- Delayed decision-making on breakdowns
- Too much dependency on senior experts
- No unified view of process + maintenance data
- Troubleshooting takes too long
- Repetitive questions overload experts
- Inaccurate or inconsistent responses



INDUSTRY CHALLENGES & XGINEER SOLUTION

QUALITY & LAB TEAMS REAL PAIN POINTS IN INDUSTRY

- LIMS data, sample tracking, and batch info are disconnected
- Heavy manual effort during audits
- Difficulty linking quality issues with real process conditions
- Long delays in batch release
- Limited visibility of sample status
- Poor traceability and audit trail
- Difficulty ensuring compliance across multiple sites or shifts



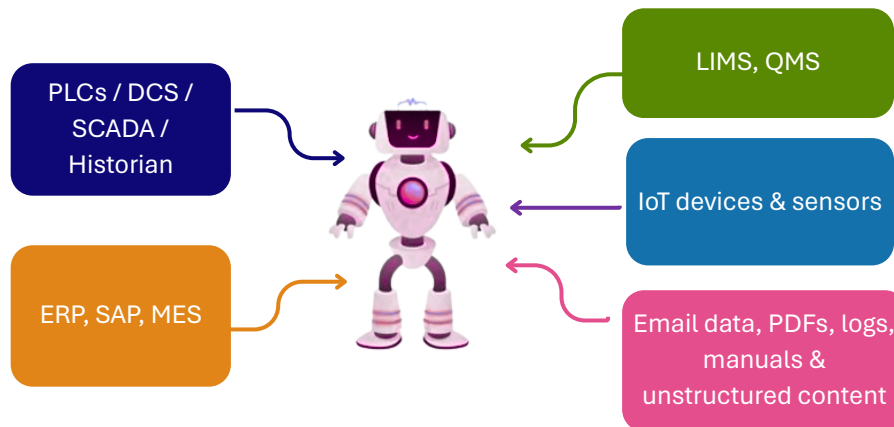
MANAGERS & EXECUTIVES' REAL PAIN POINTS IN INDUSTRY



- KPIs delivered late
- No plant-wide unified view across shifts, units, lines, and sites
- Daily production or quality issues remain unclear
- Too much dependency on individual analysts
- Delayed root-cause identification
- No quick answers to strategic questions
- Slow reaction to anomalies or drifts

XGINEER – THE COMPREHENSIVE INDUSTRIAL SOLUTION

Xgineer- Your AI Agent, Able to Connect Seamlessly Across OT, IT & IIoT



“Ask any complex plant question — Xgineer answers instantly with Dashboards, Trends, RCA, and Predictions.”

VALUE BY ROLE / FUNCTION

For Operators

- Know what's happening in the plant right now
- View alarms, interlocks, and parameter deviations instantly
- Get guided actions based on historical patterns
- No manual report preparation — everything auto-generated

For Process / Plant Engineers

- Compare batches, lines, furnaces, reactors, or SKUs on the fly
- Identify hidden correlations across OT-quality-production data
- Faster root-cause analysis
- Detect inefficiencies in steam, power, compressed air, fuel, etc.
- Spend more time optimizing — less time hunting data

For Quality & Lab

- Retrieve sample results, COAs, calibration & audit data instantly
- Auto-generate compliance and deviation reports
- Full traceability linking quality outcomes with process conditions

For Production & Maintenance

- Monitor asset health & failure patterns
- Predict breakdowns using process + maintenance history
- Access past breakdown RCA instantly
- Improve uptime and reduce unplanned shutdowns

For Managers & Executives

- Daily plant summaries in one message
- Cost, energy, throughput & quality KPIs on demand
- Early warning insights for losses and bottlenecks
- Stronger, faster, confident decision-making

For CTOs & IT Heads

- No major infra change needed — works with existing systems
- Ensures secure, governed, role-based access
- Reduces dependency on dashboards, BI tools & multiple software layers

WHY XGINEER IS DIFFERENT

- **Built for Plant Floors — Not Just IT Departments**
- **Conversational Industrial Analytics, ask in English (or native language).**
- **Real-Time + Historical Intelligence**
- **Predictive & Prescriptive Recommendations**
- **Secure. Scalable. Industrial Grade chatbot**

In Simple Word: Xgineer is the smartest engineer on your team — available 24/7, who knows every system, every trend, and every plant behaviour.

Get a Demo — Contact Us

